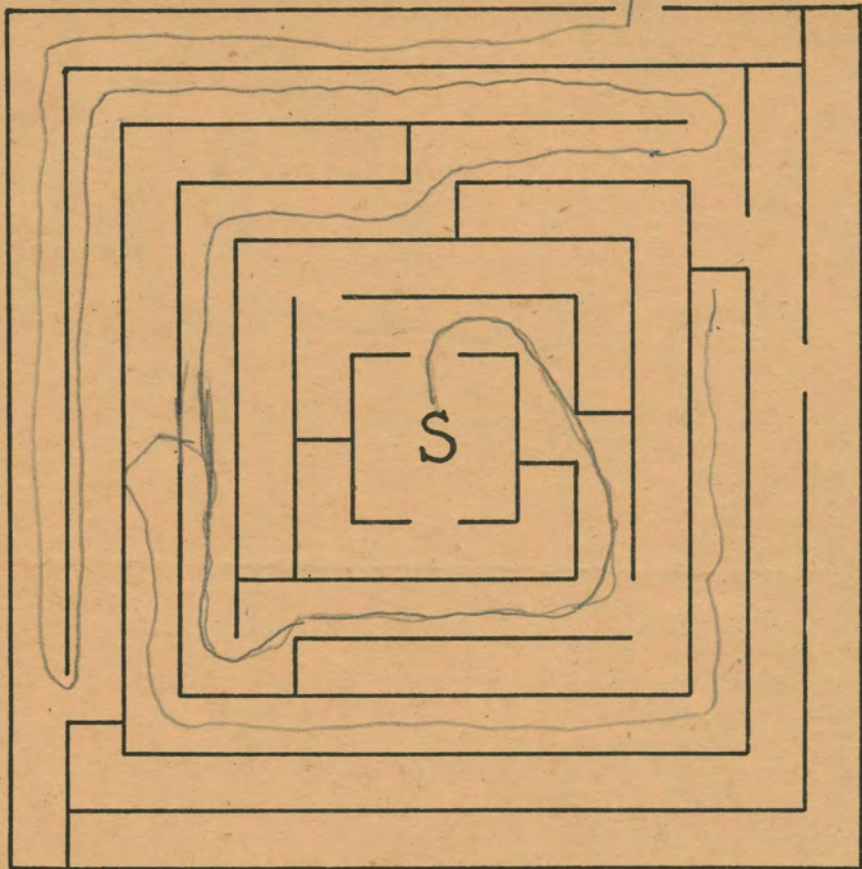


Envelope with blank tests
in closet in ppic. Contains
also, ^{blank} ink spot tests

Discard



Porteus Tests—Vineland Revision

Year XIV

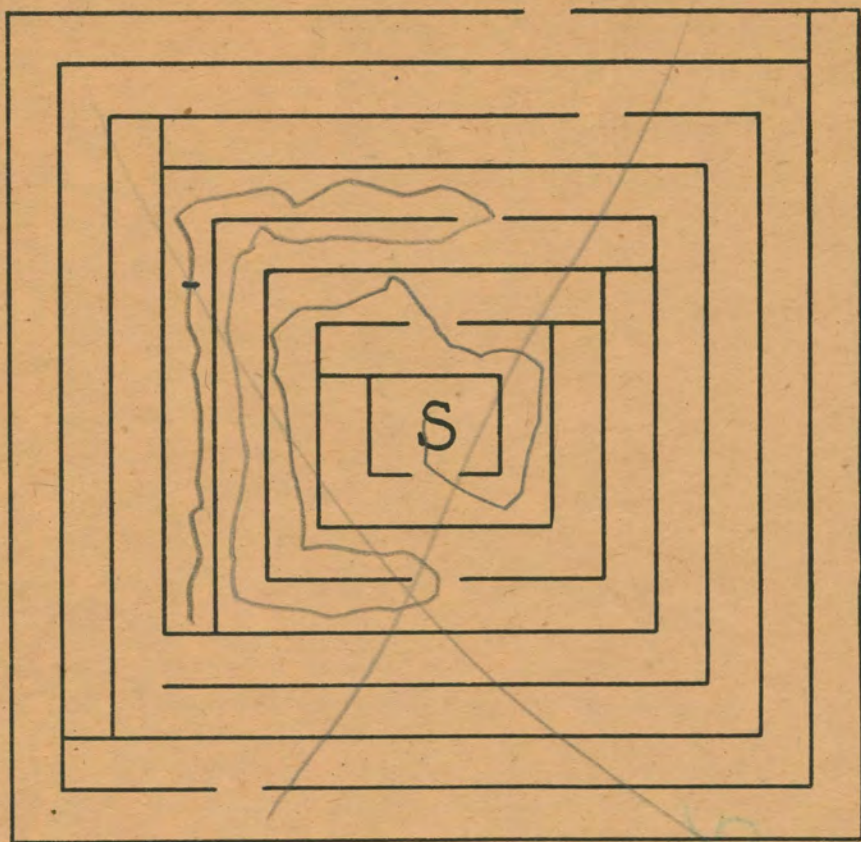
New Series—Copyrighted 1933

Published by

The Psychological Corporation
522 Fifth Avenue
New York, N. Y.

Printed in U.S.A.

48-106T (11/12)



Porteus Tests—Vineland Revision

Year XI

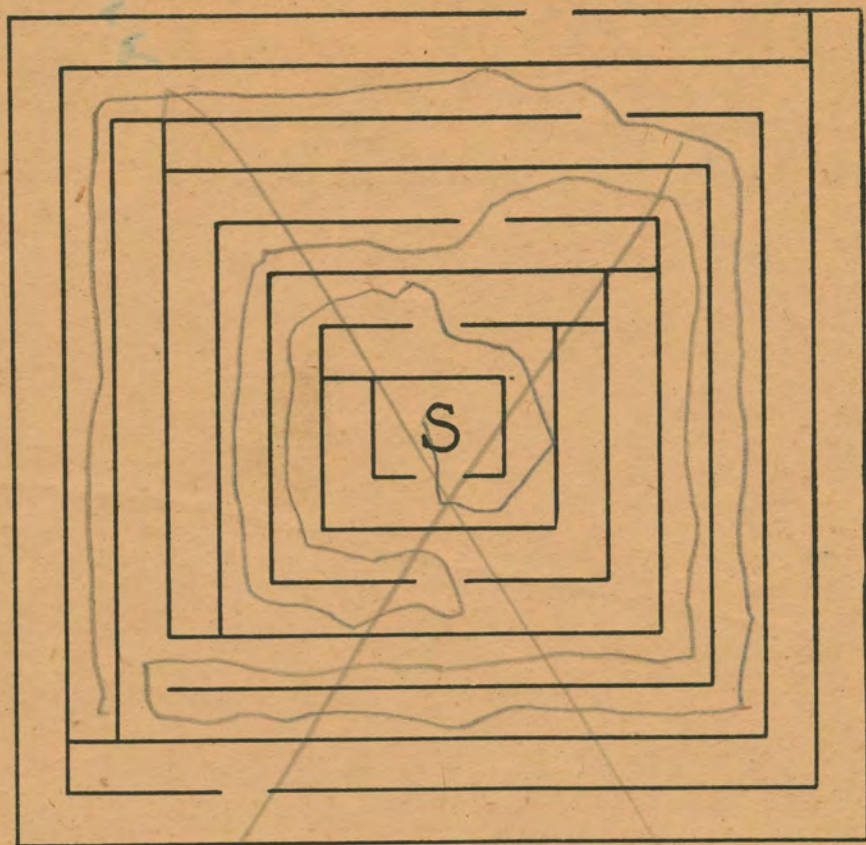
New Series—Copyrighted 1933

Published by

The Psychological Corporation
522 Fifth Avenue
New York, N. Y.

Printed in U.S.A.

48-106T (9/12)



Porteus Tests—Vineland Revision

Year XI

New Series—Copyrighted 1933

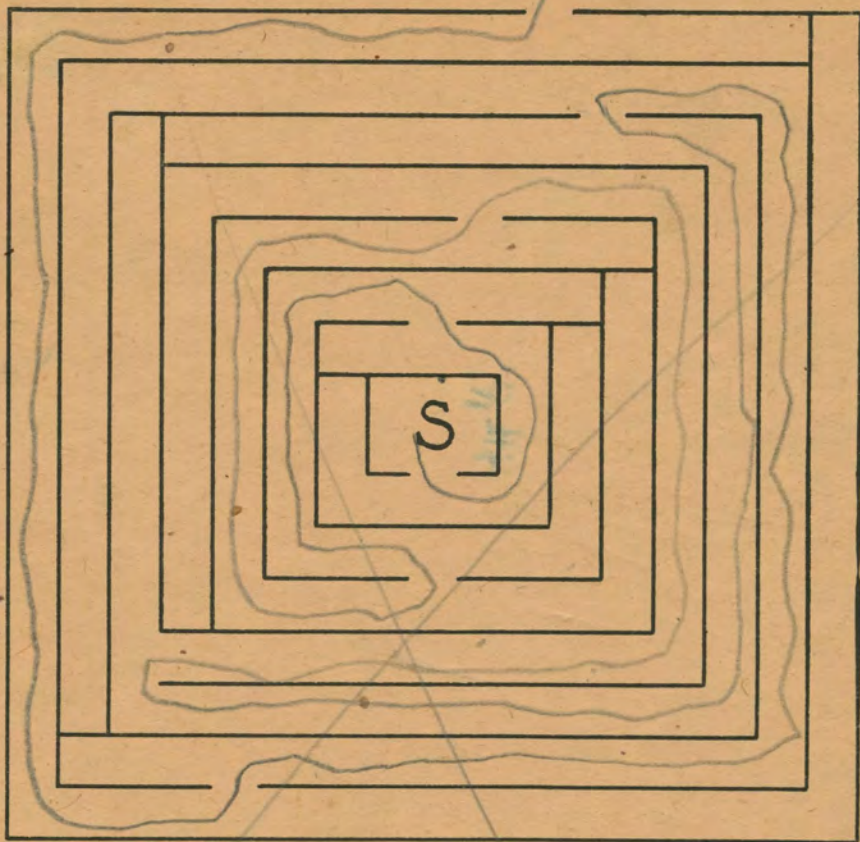
Published by

The Psychological Corporation
522 Fifth Avenue
New York, N. Y.

Printed in U.S.A.

48-106T (9/12)

18



Porteus Tests—Vineland Revision

Year XI

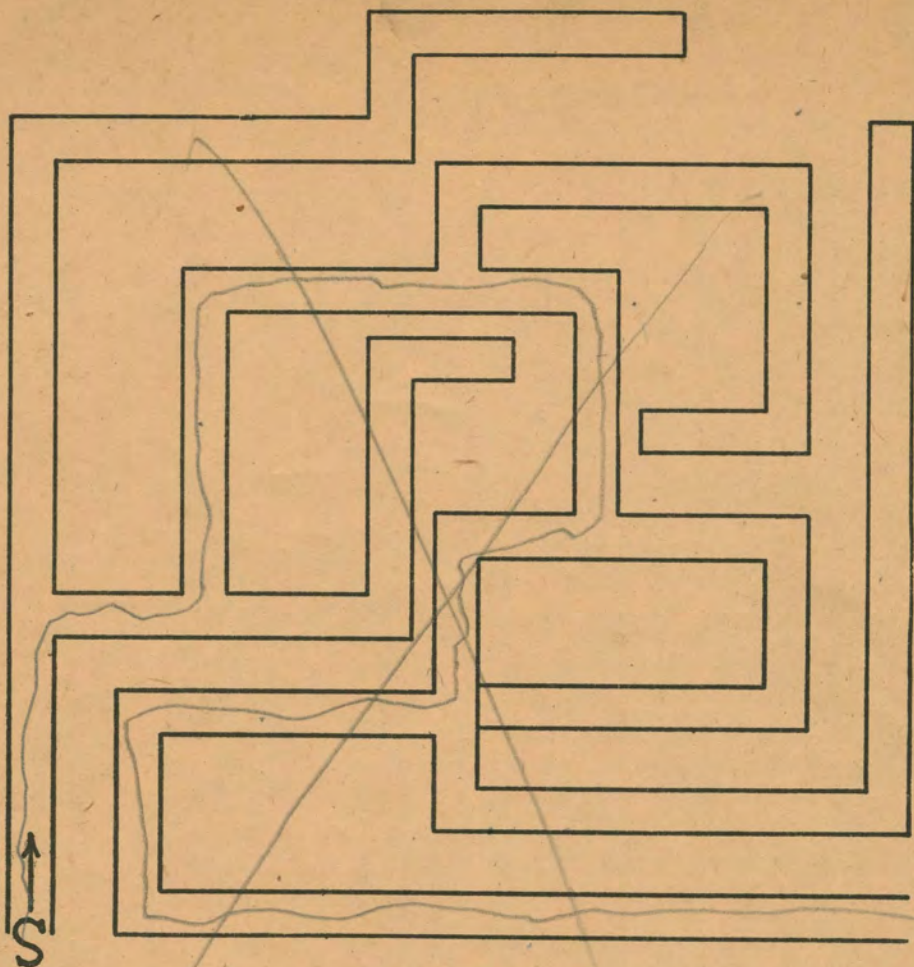
New Series—Copyrighted 1933

Published by

The Psychological Corporation
522 Fifth Avenue
New York, N. Y.

Printed in U.S.A.

48-106T (9/12)



Porteus Tests—Vineland Revision

Year IX

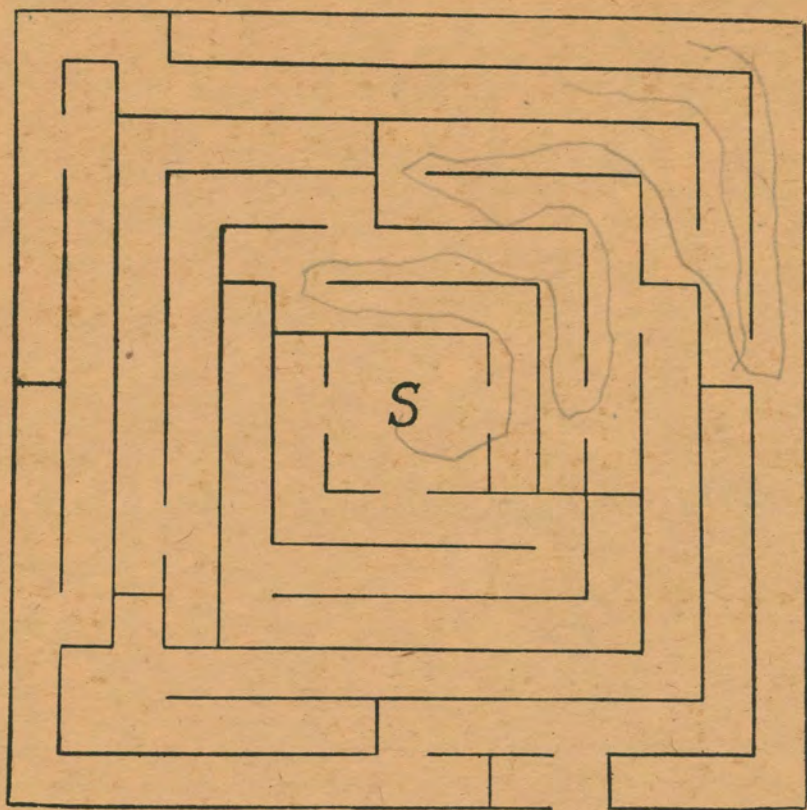
New Series—Copyrighted 1933

Published by

The Psychological Corporation
522 Fifth Avenue
New York, N. Y.

Printed in U.S.A.

48-106T (7/12)



Porteus Tests—Vineland Revision

Adult 1

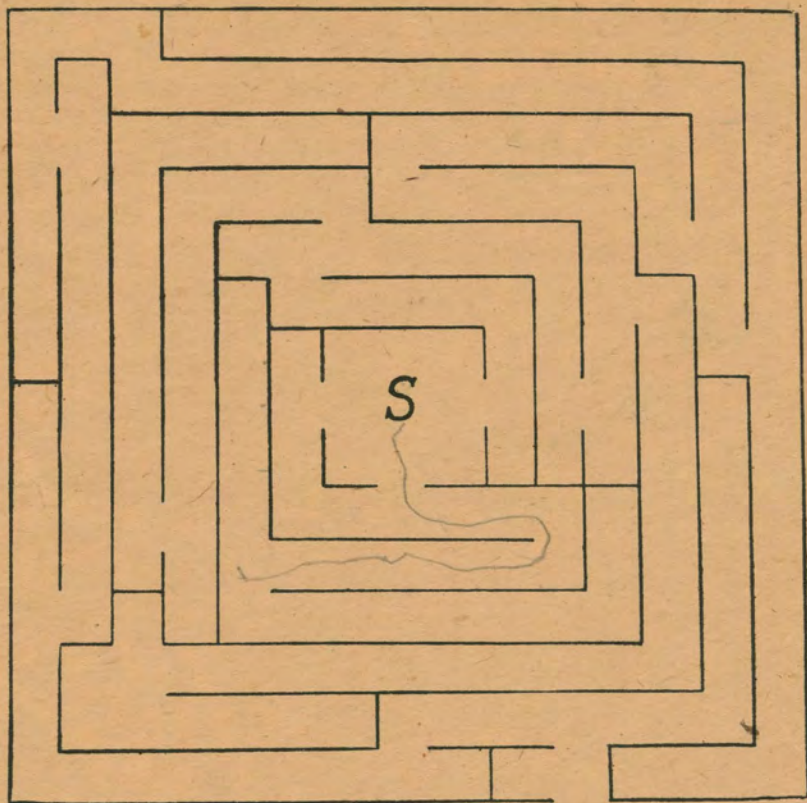
New Series—Copyrighted 1933

Published by

The Psychological Corporation
522 Fifth Avenue
New York, N. Y.

Printed in U.S.A.

48-106T (12/12)



Porteus Tests—Vineland Revision

Adult 1

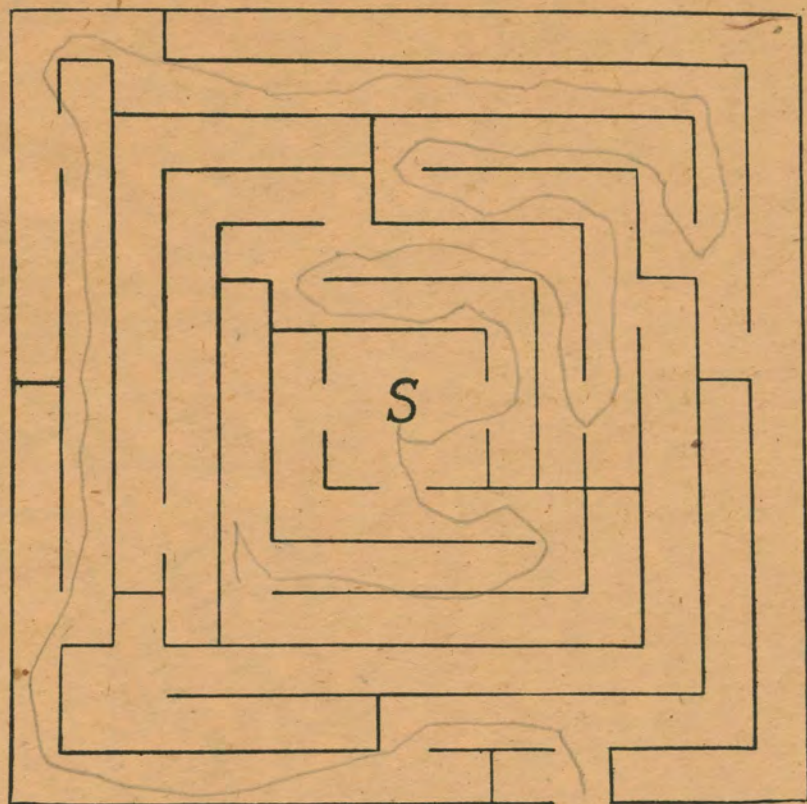
New Series—Copyrighted 1933

Published by

The Psychological Corporation
522 Fifth Avenue
New York, N. Y.

Printed in U.S.A.

48-106T (12/12)



Porteus Tests—Vineland Revision

Adult 1

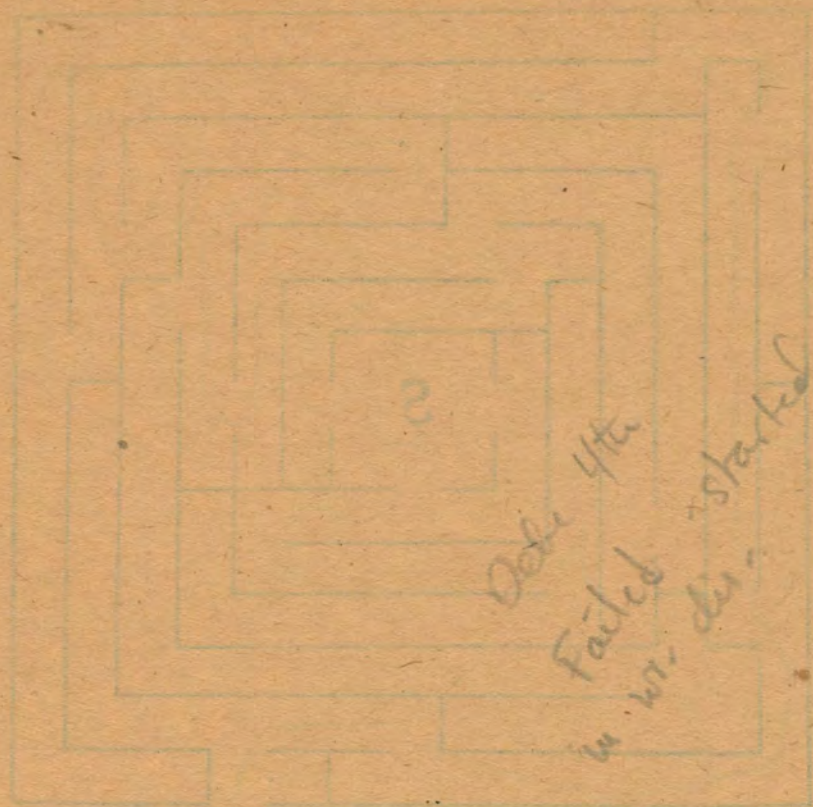
New Series—Copyrighted 1933

Published by

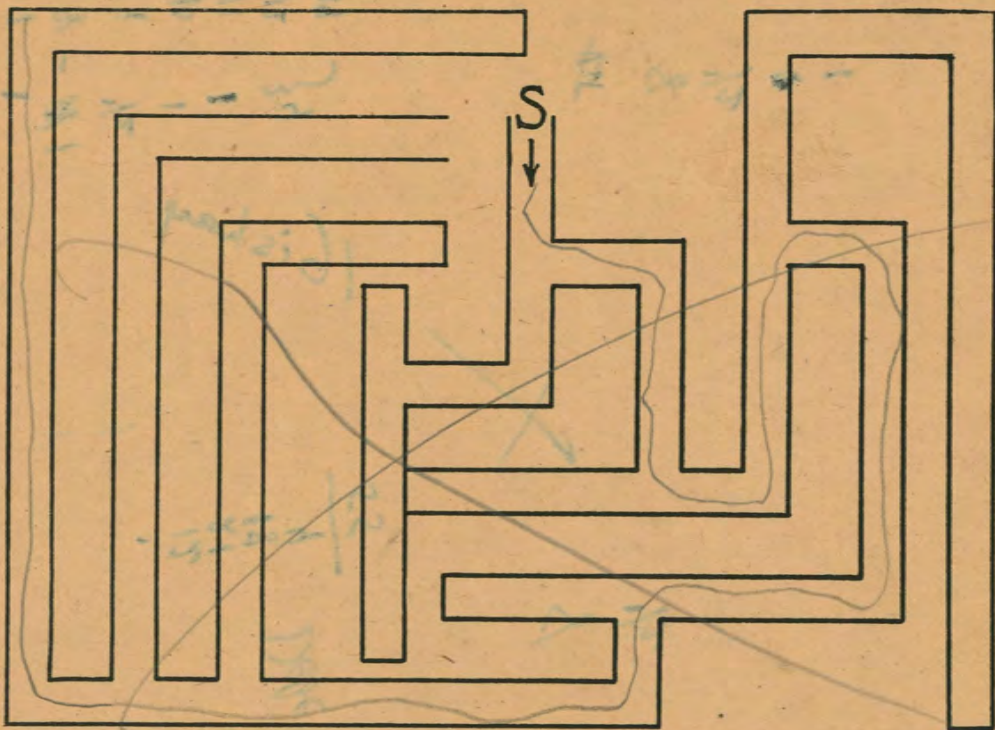
The Psychological Corporation
522 Fifth Avenue
New York, N. Y.

Printed in U.S.A.

48-106T (12/12)



Dede 4th
Failed
in wt. dis.
started



Porteus Tests—Vineland Revision

New Series—Copyrighted 1933

Published by

The Psychological Corporation

522 Fifth Avenue

New York, N. Y.

Year X

X

Printed in U.S.A.

48-106T (8/12)

3rd - not
count.

count
249. 10/1

5	1
6	1
7	1
8	- 1
9	1/2
10	1
11	1
12	} 4
14	

4 1/2

1
1

16 is best

.
12
21
18
4
<hr/>
55

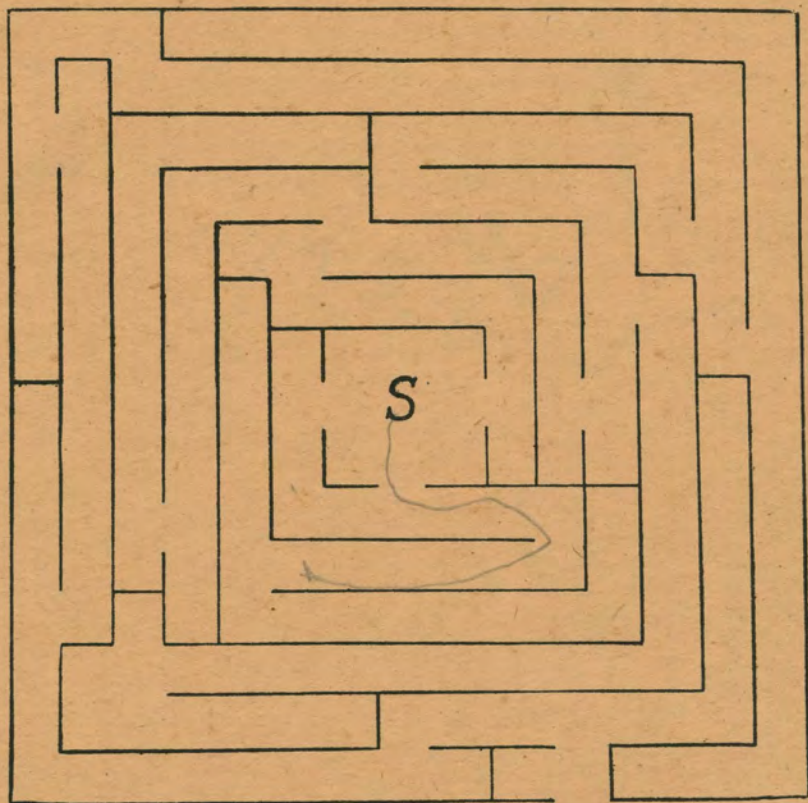
Debe

X

ttt
8
1/2
•
1

8
1/2

X



Porteus Tests—Vineland Revision

Adult 1

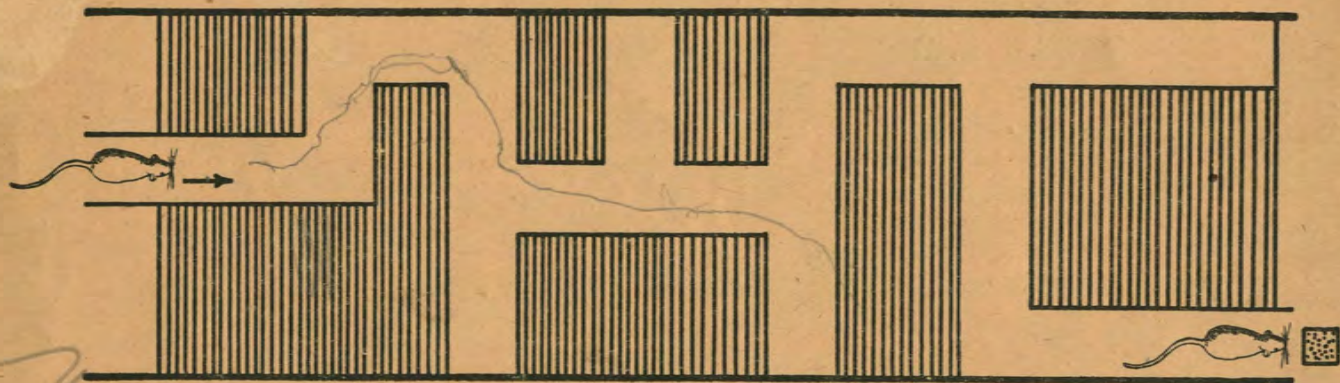
New Series—Copyrighted 1933

Published by

The Psychological Corporation
522 Fifth Avenue
New York, N. Y.

Printed in U.S.A.

48-106T (12/12)



Porteus Tests—Vineland Revision

Year V

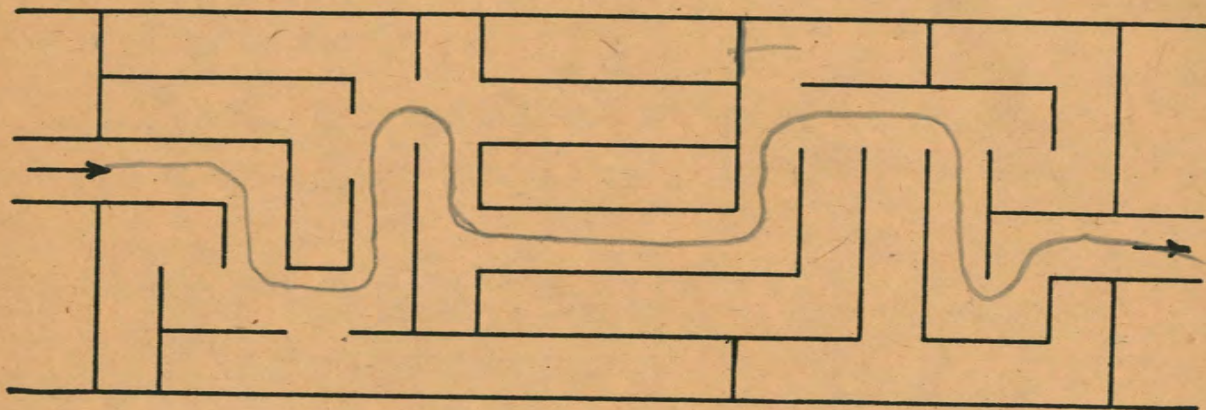
New Series—Copyrighted 1933

Published by

The Psychological Corporation
522 Fifth Avenue
New York, N. Y.

Printed in U.S.A.

48-106T (3/12)



Porteus Tests—Vineland Revision

Year VII

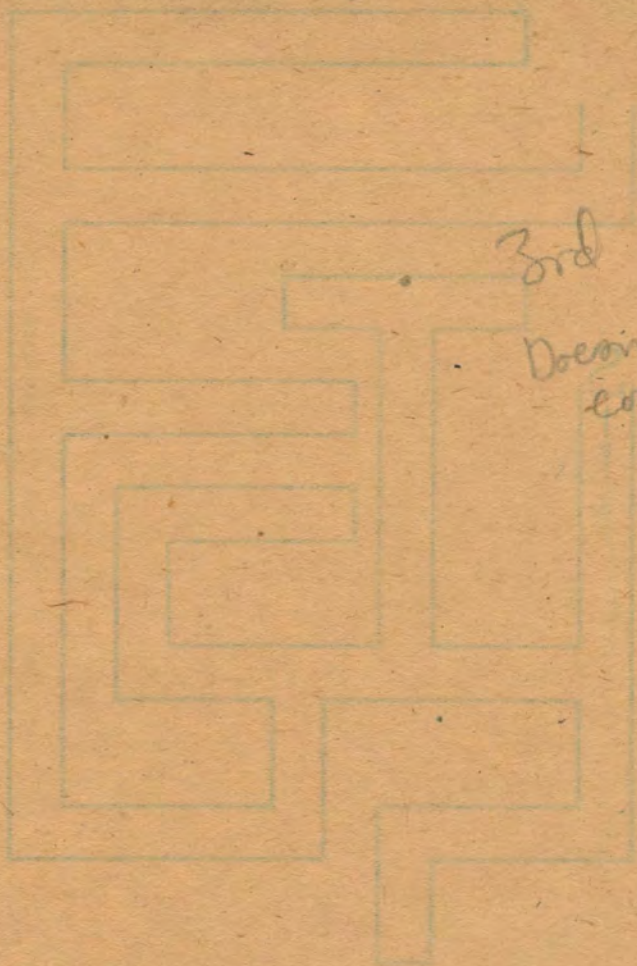
New Series—Copyrighted 1933

Published by

The Psychological Corporation
522 Fifth Avenue
New York, N. Y.

Printed in U.S.A.

48-106T (5/12)



3rd

Doesn't
cover

1117 100

1117 100

1117 100

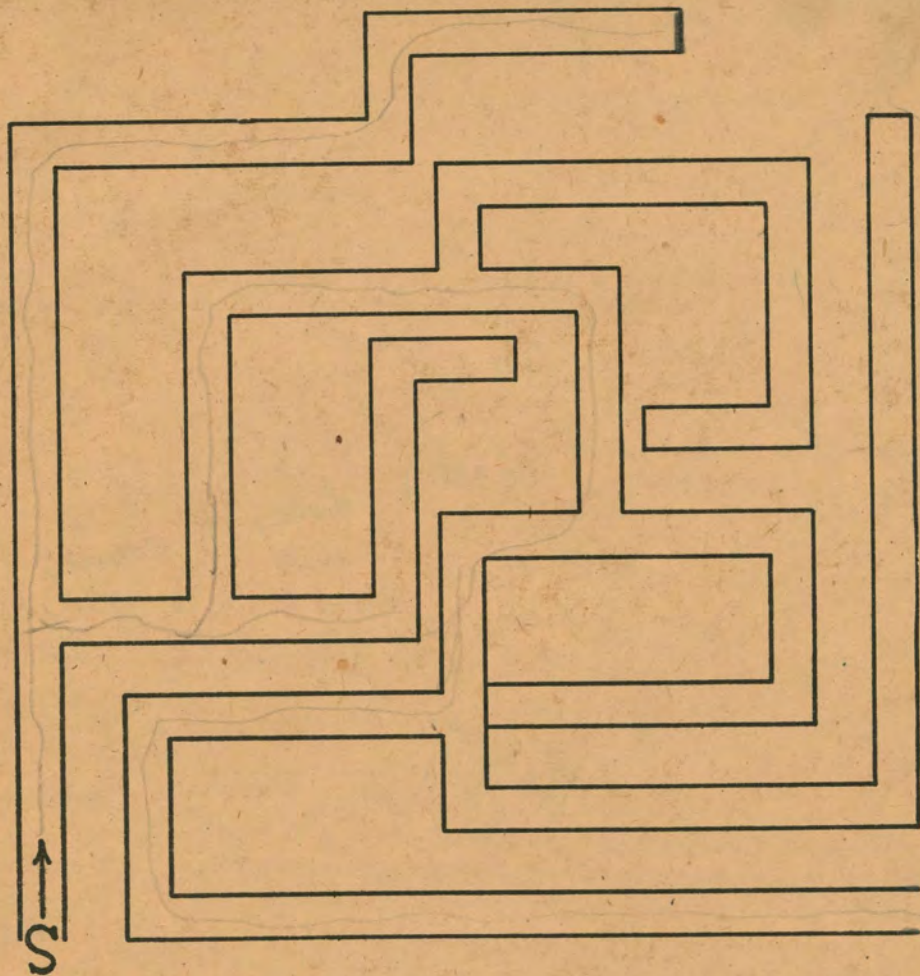
1117 100

1117 100

1117 100

1117 100

1117 100



Porteus Tests—Vineland Revision

Year IX

New Series—Copyrighted 1933

Published by

The Psychological Corporation
522 Fifth Avenue
New York, N. Y.

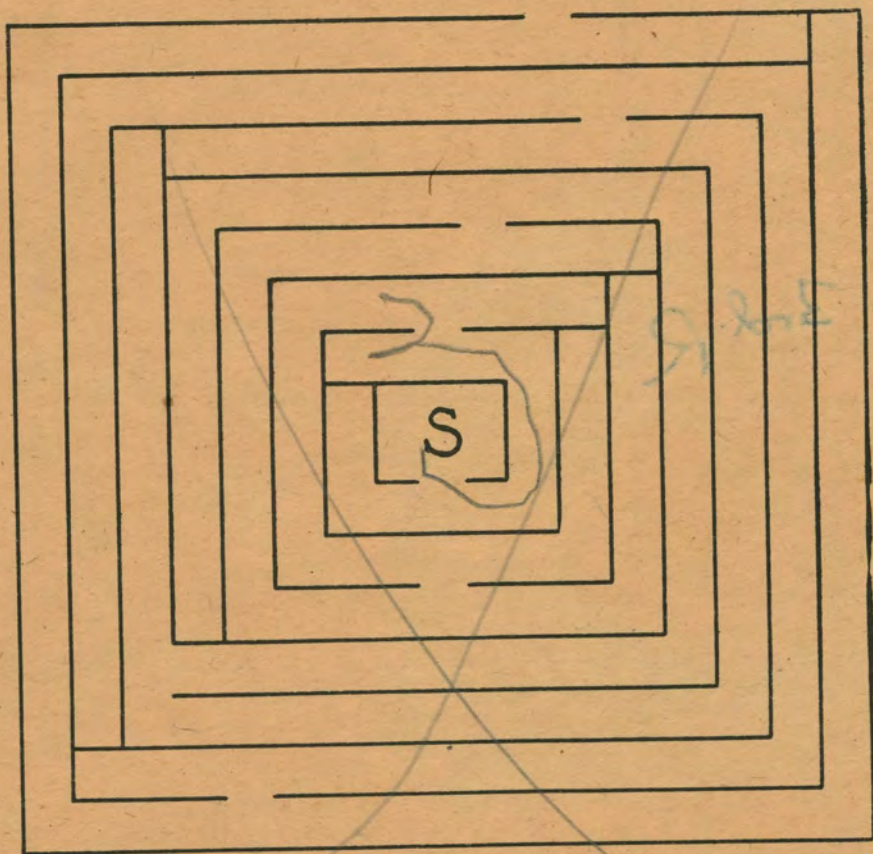
Printed in U.S.A.

48-106T (7/12)

On -

Last + doesn't count -

Hagen



Porteus Tests—Vineland Revision

Year XI

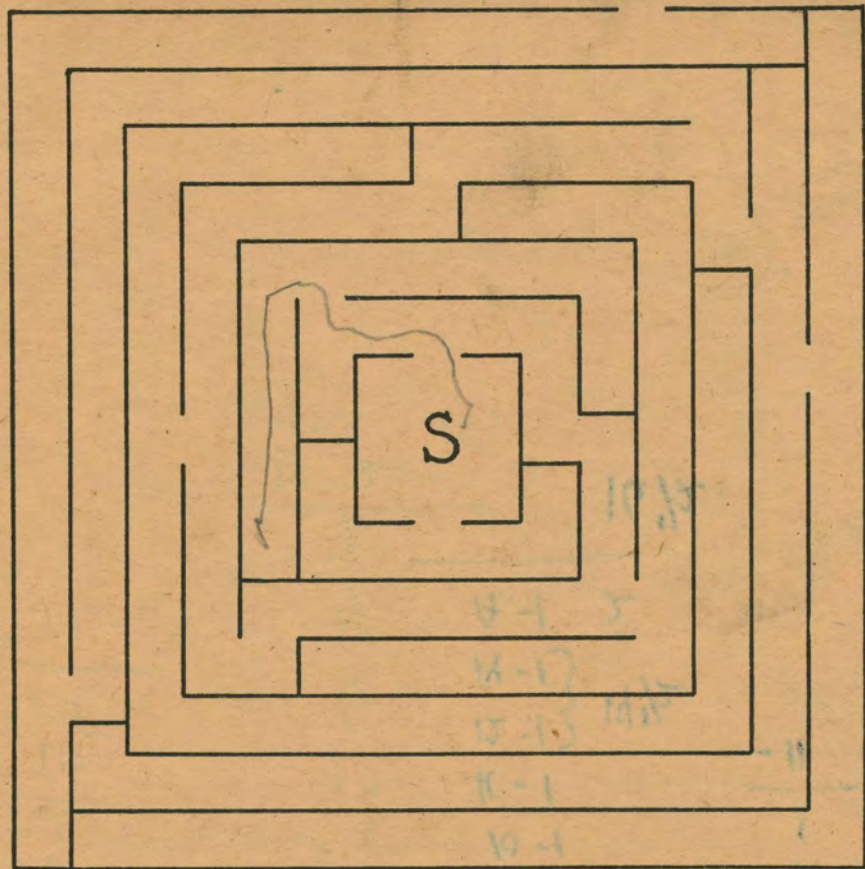
New Series—Copyrighted 1933

Published by

The Psychological Corporation
522 Fifth Avenue
New York, N. Y.

Printed in U.S.A.

48-106T (9/12)



Porteus Tests—Vineland Revision

Year XIV

New Series—Copyrighted 1933

Published by

The Psychological Corporation
522 Fifth Avenue
New York, N. Y.

Printed in U.S.A.

48-106T (11/12)

Test Age

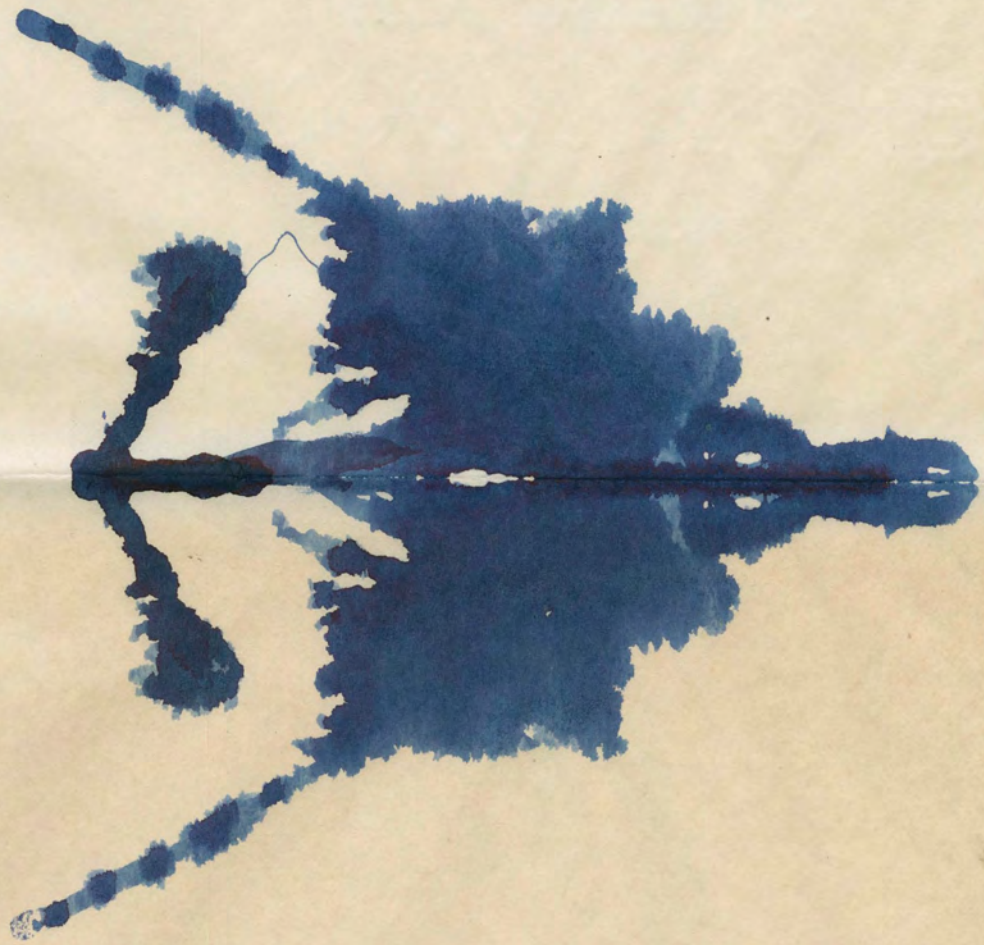
$$\begin{array}{r}
 4 \\
 +3 \\
 \hline
 7 \\
 +1 \\
 \hline
 8 \\
 +2 \\
 \hline
 10 \\
 +1 \\
 \hline
 11
 \end{array}$$

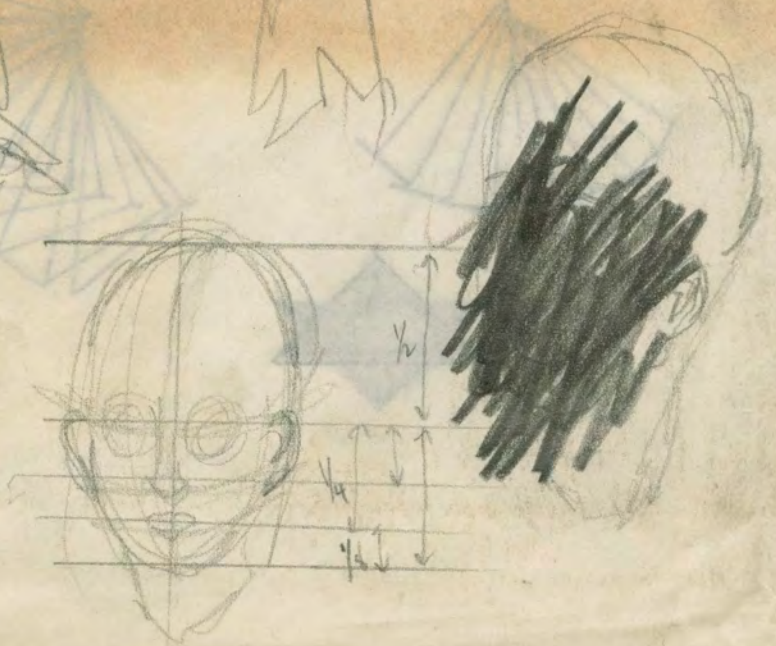
$$\begin{array}{r}
 8 \\
 38 \\
 12 \\
 6 \\
 4
 \end{array}$$

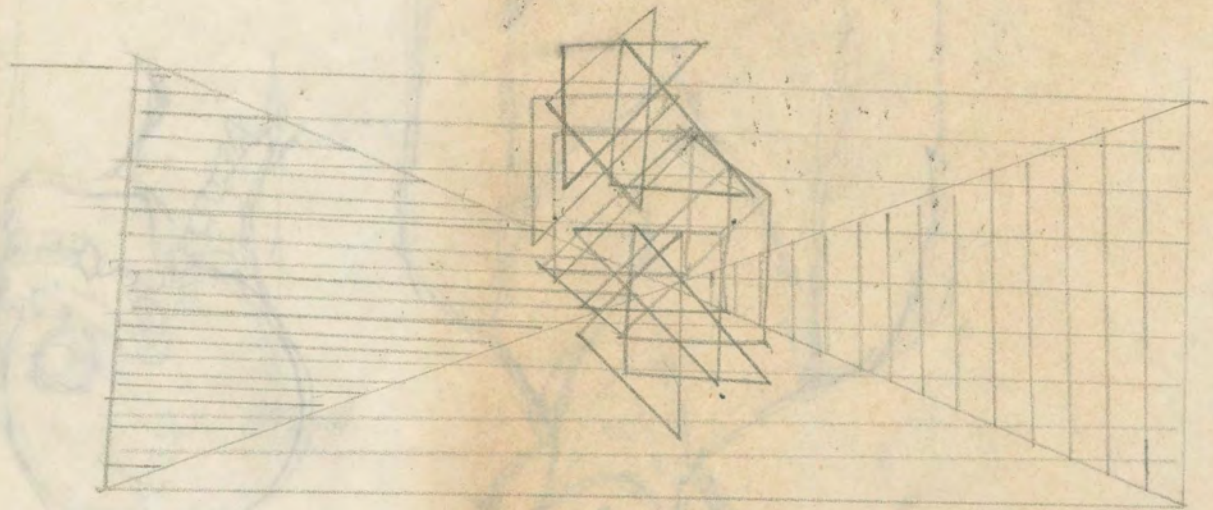
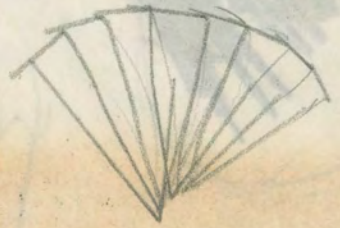
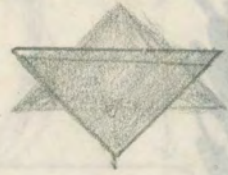
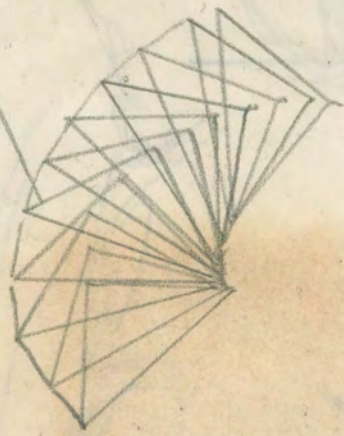
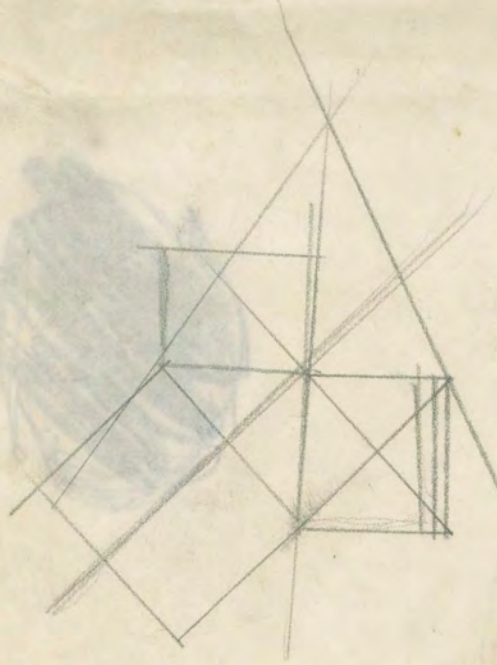
$$\begin{array}{r}
 4 \\
 \hline
 42 \\
 094 \quad 151
 \end{array}$$

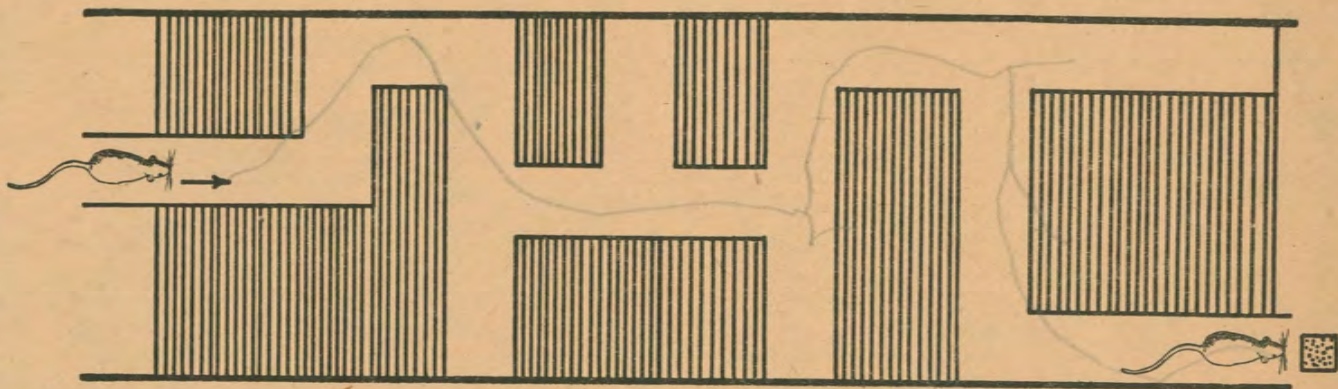
Ledimo	Qual.
5-1	2
6-1	2
7-2 1/2	2
8-1	2
9-1	2
10-1	1
11-1	-11
12-1 } 14 1/2	
14-1 }	
A-1 2	

$$16 \frac{1}{2}$$









Porteus Tests—Vineland Revision

Year V

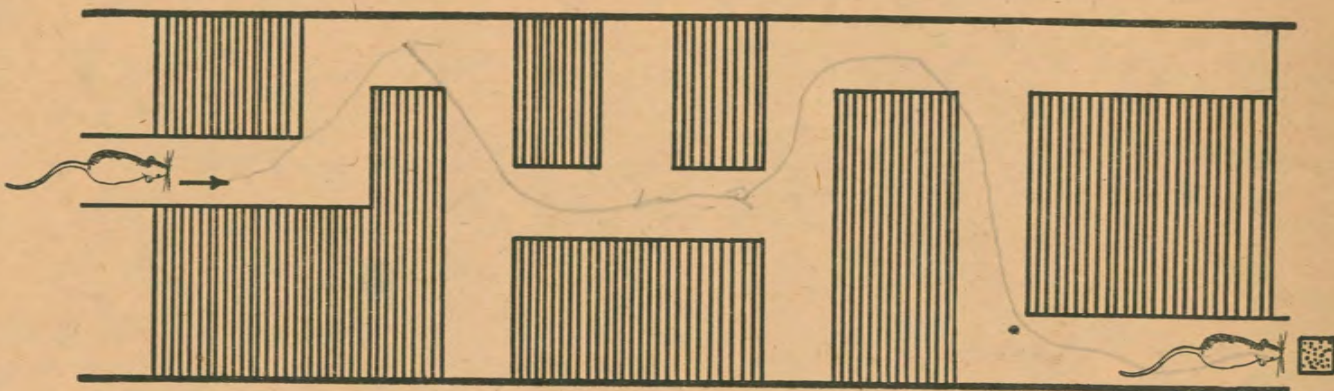
New Series—Copyrighted 1933

Published by

The Psychological Corporation
522 Fifth Avenue
New York, N. Y.

Printed in U.S.A.

48-106T (3/12)



Porteus Tests—Vineland Revision

Year V

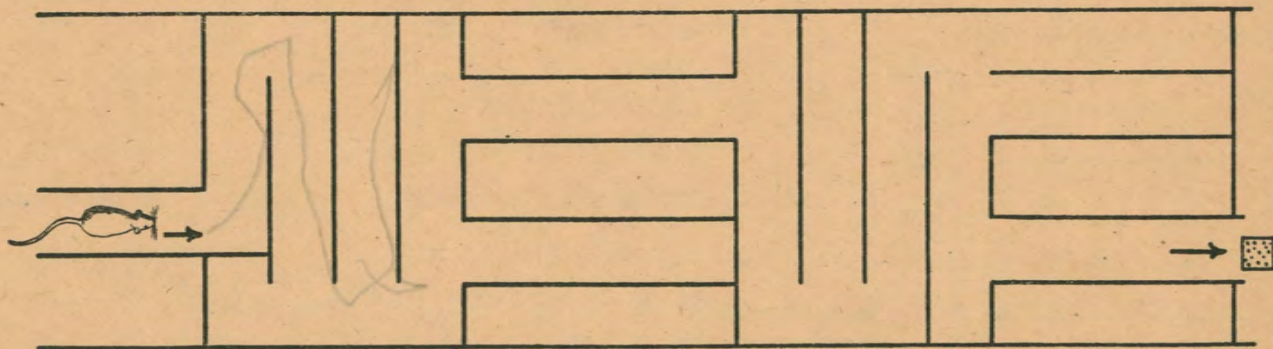
New Series—Copyrighted 1933

Published by

The Psychological Corporation
522 Fifth Avenue
New York, N. Y.

Printed in U.S.A.

48-106T (3/12)



Porteus Tests—Vineland Revision

Year VI

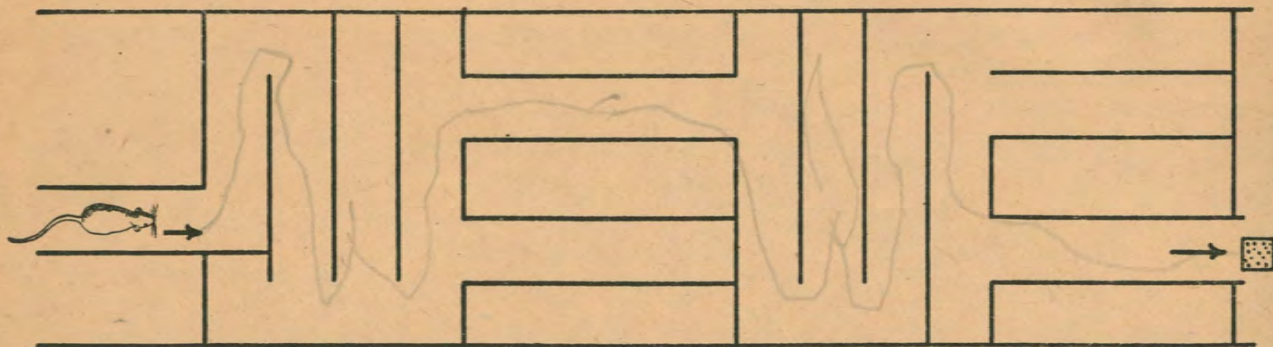
New Series—Copyrighted 1933

Published by

The Psychological Corporation
522 Fifth Avenue
New York, N. Y.

Printed in U.S.A.

48-106T (4/12)



Porteus Tests—Vineland Revision

Year VI

New Series—Copyrighted 1933

Published by

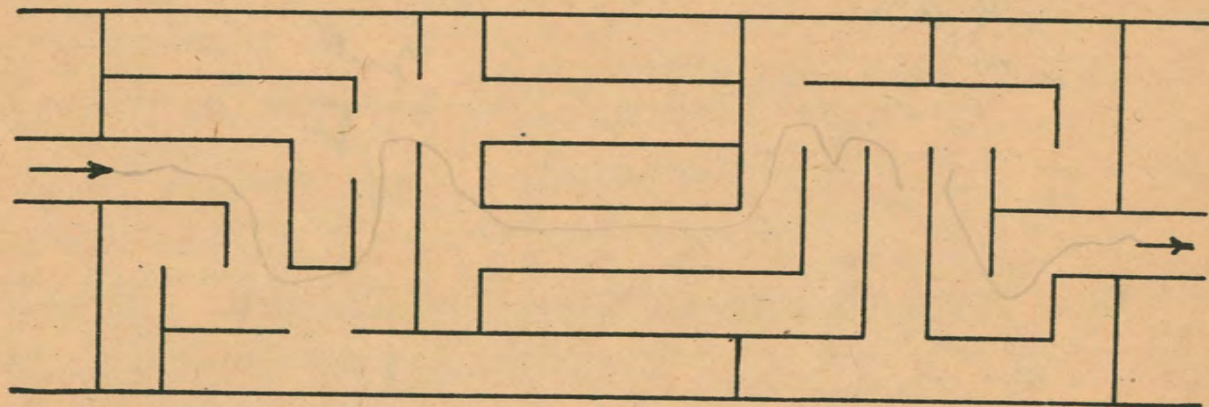
The Psychological Corporation

522 Fifth Avenue

New York, N. Y.

Printed in U.S.A.

48-106T (4/12)



Porteus Tests—Vineland Revision

Year VII

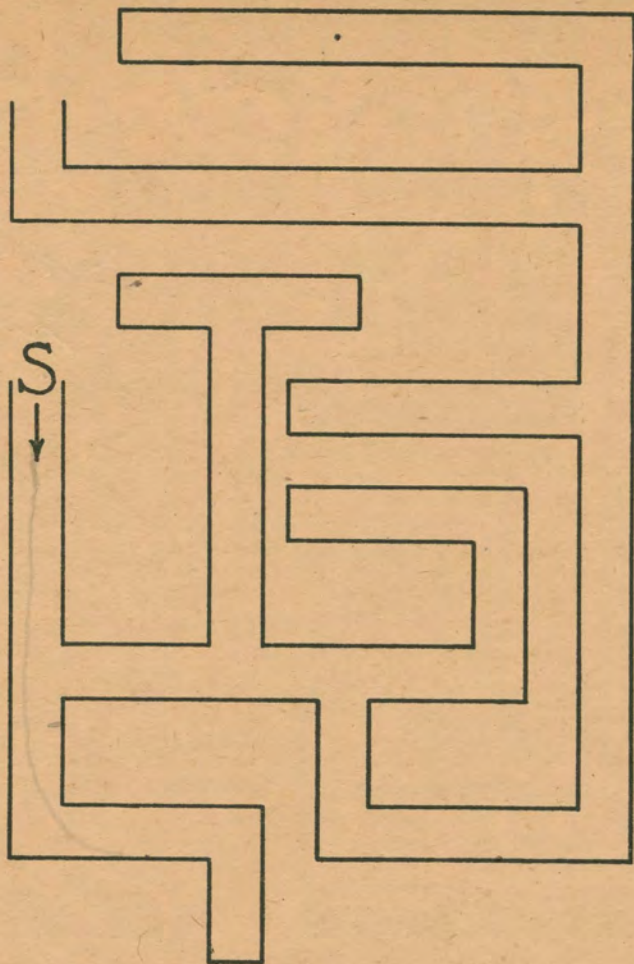
New Series—Copyrighted 1933

Published by

The Psychological Corporation
522 Fifth Avenue
New York, N. Y.

Printed in U.S.A.

48-106T (5/12)



Porteus Tests—Vineland Revision

Year VIII

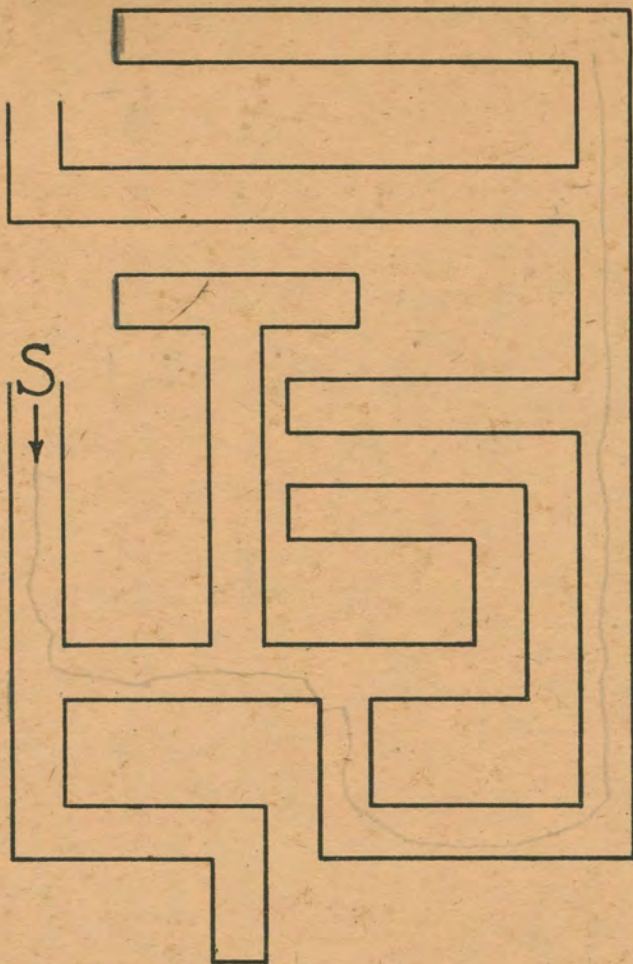
New Series—Copyrighted 1933

Published by

The Psychological Corporation
522 Fifth Avenue
New York, N. Y.

Printed in U.S.A.

48-106T (6/12)



Porteus Tests—Vineland Revision

Year VIII

New Series—Copyrighted 1933

Published by

The Psychological Corporation
522 Fifth Avenue
New York, N. Y.

Printed in U.S.A.

48-106T (6/12)

Di Khaw-

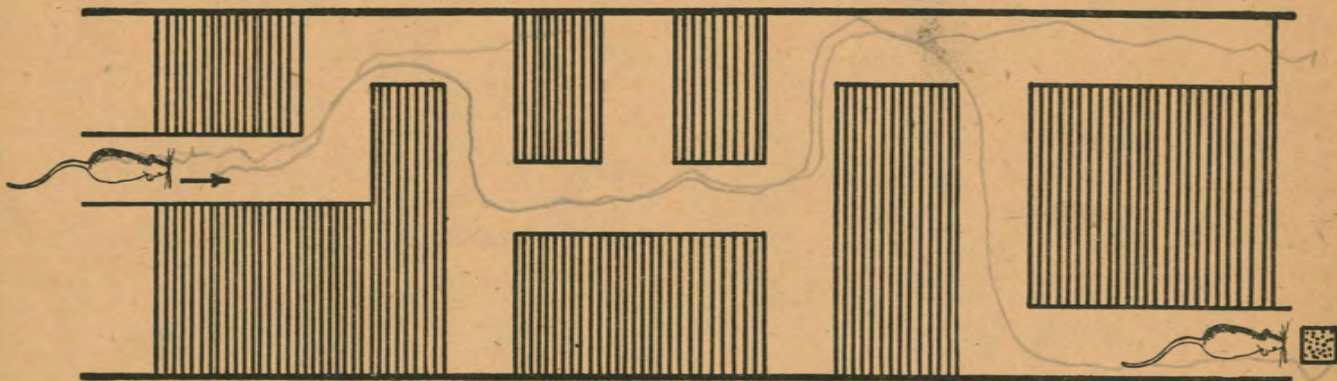
old ♀

ISR

THE NATIONAL ARCHIVES
1335 CONGRESS AVENUE
NEW YORK, N. Y.

2nd 16

D. K. Know
PLB ♀



Porteus Tests—Vineland Revision

Year V

New Series—Copyrighted 1933

Published by

The Psychological Corporation

522 Fifth Avenue

New York, N. Y.

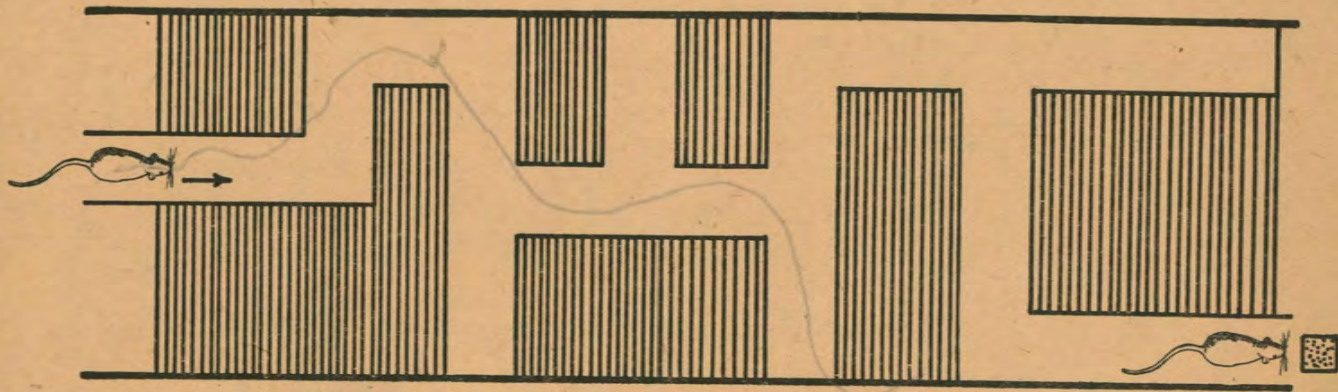
Printed in U.S.A.

48-106T (3/12)

187-

trial

Chullo



Porteus Tests—Vineland Revision

Year V

New Series—Copyrighted 1933

Published by

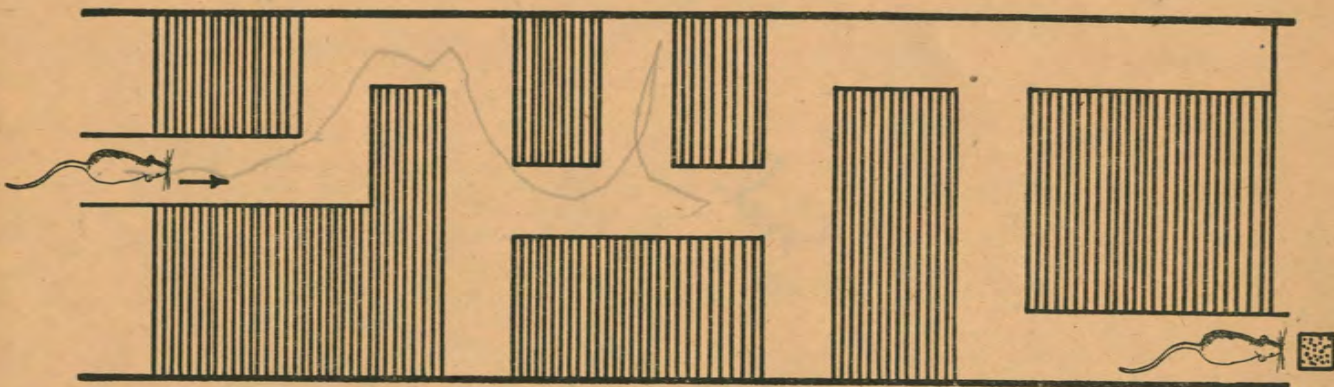
The Psychological Corporation
522 Fifth Avenue
New York, N. Y.

Printed in U.S.A.

48-106T (3/12)

2nd

Chas. H. C.



Porteus Tests—Vineland Revision

Year V

New Series—Copyrighted 1933

Published by

The Psychological Corporation

522 Fifth Avenue

New York, N. Y.

Printed in U.S.A.

48-106T (3/12)



ord.

F

Chu 1/0

Fig. 1

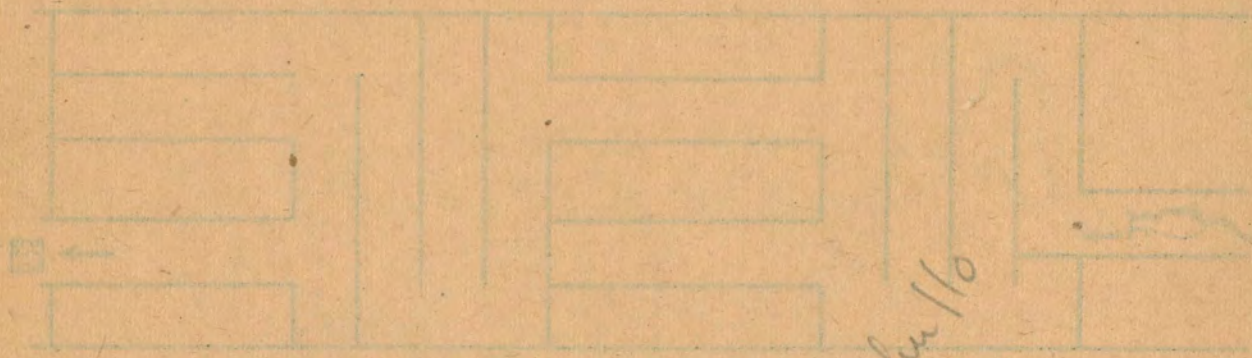
Section of the structure

The structure is composed of several vertical sections of varying heights and widths, as shown in the drawing. The sections are filled with horizontal lines, indicating a specific material or construction method. The overall structure is rectangular and oriented horizontally on the page.

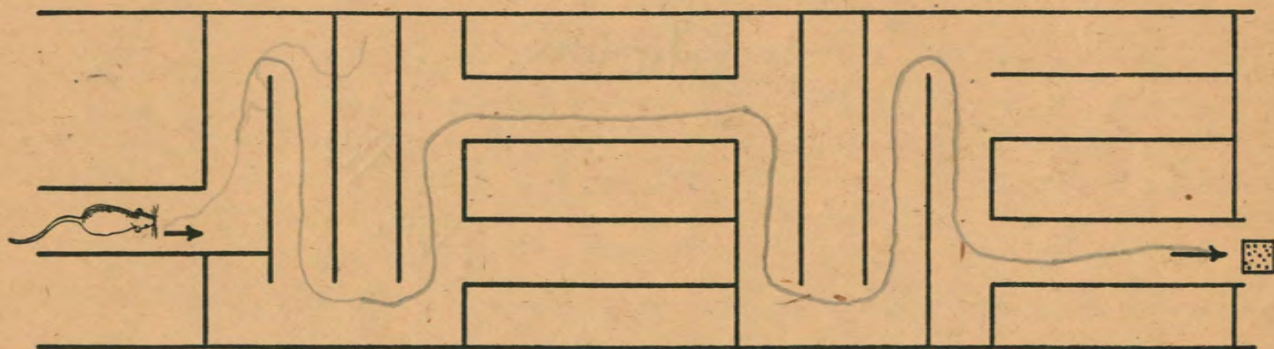
Fig. 2

Fig. 3

111
Prof on



Plan 1/6



Porteus Tests—Vineland Revision

Year VI

New Series—Copyrighted 1933

Published by

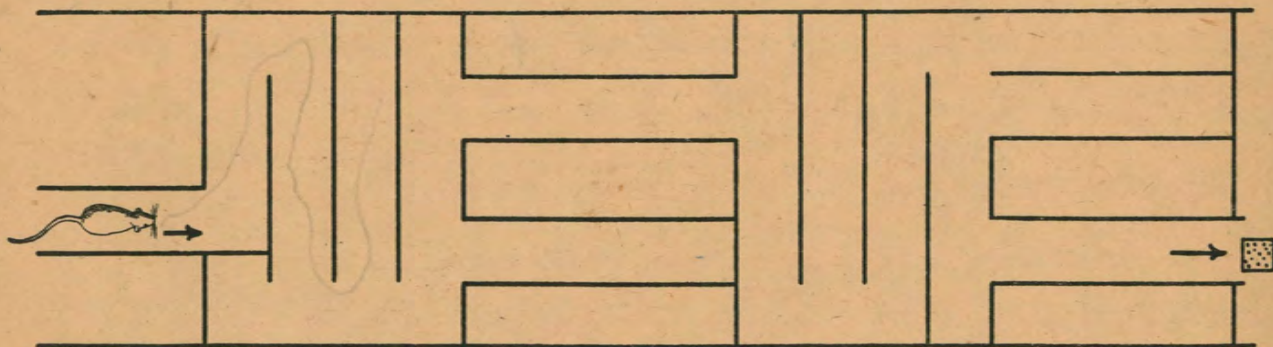
The Psychological Corporation
522 Fifth Avenue
New York, N. Y.

Printed in U.S.A.

48-106T (4/12)

md. Shoran

Ch. 110



Porteus Tests—Vineland Revision

Year VI

New Series—Copyrighted 1933

Published by

The Psychological Corporation
522 Fifth Avenue
New York, N. Y.

Printed in U.S.A.

48-106T (4/12)

Lud

F

Chullo

Handwritten text, possibly bleed-through from the reverse side of the page, including the words "Lud" and "F".

GIVING THE PORTEUS MAZE TEST

Procedure:

- 1) Sit opposite the subject so that you can hold the corner of the maze firm and see his reaction.
- 2) Have a board or something firm for him to work on and 2 or more sharp pencils handy.
- 3) Keep the maze blocks face down, handy to tear off a new sheet as soon as you need it.
- 4) As soon as a subject finishes with a maze paper, take it away and write the number of times he lifted his pencil in the corner. Put p beside this number. Also number the paper, is it the first he did? The second?

N.B. Numbering the paper: If he does all 12 mazes with one trial each, the numbering would run from 1 to 12. If he took two trials on one maze, the numbering would run from 1 to 13. Say the subject took two trials on Maze V, the beginning maze, those two papers would be 1 and 2. He then goes on to Maze VI, completes it in 2 trials. Those papers would be 3 and 4. He then does Maze VII in one trial. That paper would be # 5. He does VIII in 2 trials, those would be # 6 and # 7 respectively.

The Mazes:

- 1) The first Maze to be given is Maze V. Do not begin below this age. Tear off a paper, give it to subject, and say: " Here is a mouse, here is some food. This arrow points the way the mouse gets to the food. I want you to take the pencil and go from the mouse to the food without taking your pencil off the paper, without crossing any of the lines, without going into any of the dark places. Remember, you must get from the mouse to the food without crossing the lines, and without picking your pencil off the paper. " Let the interpreter say it first, then repeat the last part.
- 2) Then take the pencil and draw a line from the mouse ~~xxxx~~ around the first corner.
- 3) Give the pencil to the subject and tell him to finish.
- 4) Maze V can be given 3 trials. If after that the subject completely fails to get the idea, the examiner must draw the whole path for him. He is then given one and only one more trial on that maze.
- 5) Go on to Maze VI. Show mouse and cheese, give subject the pencil. The subject is allowed only 2 trials on this one.
- 6) Maze ~~VII~~ VII. Show beginning and end. 2 trials allowed.

GIVING THE PORTEUS MAZE

NB. The examiner must give no encouragement to the subject, must make no criticism, must not nod "yes" or "no" when subj. looks at examiner to see how he's doing.

The Rules:

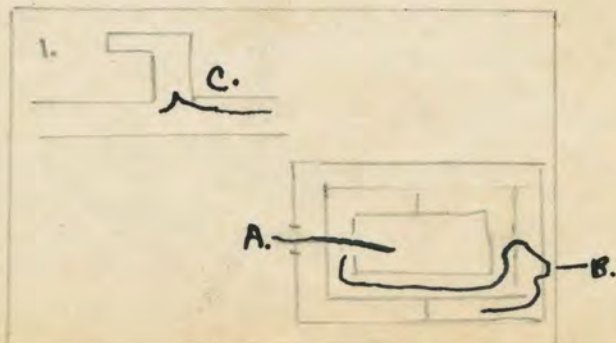
- 1) Begin Testing with Maze V.
- 2) Continue testing until subject has:
 - a- failed any three tests
 - b- failed two successive tests above year VIII.
- 3) A test is failed when the subject makes a Quantitative Error.

This is A- taking the wrong passage. Allow the subject to go as far as he likes up the wrong passage, do not stop him unless he attempts to cross the line at the end or to retrace his steps.

B- Crossing a line to reach an opening.

Note: The subject has taken the wrong passage as soon as he goes more than 1/16 of an inch across the imaginary line at the opening of this passage. The only excuse for this is a slip of the pencil which happens very rarely. Then the subject may be allowed to continue on the same Maze, otherwise his paper is removed and a new paper substituted.

- 4) Warn the subject not to lift his pencil from the paper at the beginning of the test, on Maze V. DO NOT tell him again until he has made ten pencil liftings.
- 5) Tracing in the air above the Maze with the finger or on the paper is not allowed. When you see this happening, ~~xxxxxxx~~ tell him not to and cover the maze with your hand.
- 6) Subject is NEVER allowed more than the prescribed number of trails for each maze. The subject is Never allowed to retrace his steps when he has made a mistake. Porteus states that leniency changes the picture materially.
- 7) If subject fails say test V, and passes test VI, test VI should be inverted and presented at once as a new test. If this is passed, go on to VII. Put "Inverted" on the back of the paper.



- A. Crossing line to reach opening. Quantitative error.
- B. Crossing line by accident while moving down a passage. This is OK.
- C. This would be wrong. Do not allow such. Do not allow subject to continue.

2.

7) Maze VIII. Show entrance only. Tell subject to find his way out. Do not show him the exit even if he asks. If he points to it and says "is this the exit," say "you must find it yourself."

From now on, on all subsequent mazes, show only the way in and not the way out.

8) Maze IX Two trials

9) Maze X Two trials

10) Maze XI Two trials

11) Maze XII and Maze XIV (There is no Maze XIII) four trials each.

12) The Adult Maze: This is given only under the following conditions:

1)..If the subject is over 12 years of age.

(Reason: Little children tend to do better than the older ones, therefore it makes it even more only to allow older kids to do the adult. The little ones would be sure to pass.)

2)..If there are no failures and no second trials on tests below ~~XIX~~ Maze XI.

3)..If the combined trials of Mazes XII and XIV do not total more than three.

4 trials are allowed on the Adult maze.

At the end of each paper, put the number of pencil liftings with p beside the number, and the page number. Put a * mark beside the place (number of page) where you warned subject not to lift pencil a second time.

When the test is over:

Put subject's name on each paper.

Put the date on each paper.

Clip all mazes together, and in the front put another paper which has on it:

His name followed by some brief identifying description.

Your initials

Interpreter's name

The date

Age of subject as closely as possible.

Notes on his reactions:

Below is a sample. ~~It is maze VIII. The subject has flunked Maze VII, passed Maze VIII in one trial, and you have given Maze VIII to him again, upsidedown, which he passed in one trial.~~

The Maze - *back of paper*

The sheet of information clipped to the front.

160w
3p.
#7
Inverted.

160w Helmet, husb. of 16use
L.K.M.
Gani
3/5/53
Adult, in 40s.
Careful execution, deliberated a long time before starting each maze.